

The Care and Cleaning of PGT® Eze-Breeze™ Sliding Panels

(IMPORTANT: Carefully read all instructions before proceeding.)

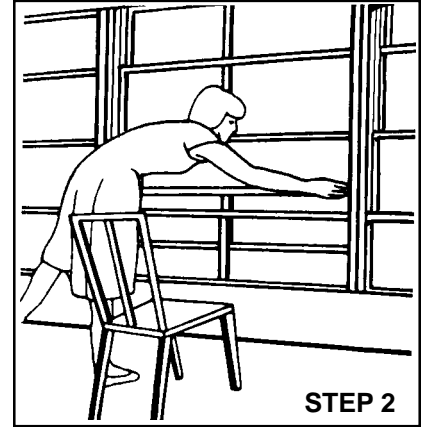
You have just purchased the best vinyl-glazed sliding panel available in today's market. With proper care and cleaning, PGT Eze-Breeze Sliding Panels can give you years of trouble-free service. The vinyl is a strong, resilient material specially formulated to resist deterioration from the sun's ultra-violet rays. This prevents them from drying out or becoming brittle. However, they must be properly cleaned and maintained.

A WORD OF CAUTION: All vinyl sliding panels can be punctured or cut with a sharp object. Remove rings, bracelets and watches when washing.

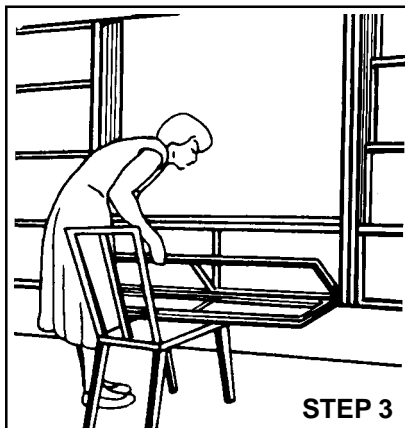
STEP 1: Allow panels to cool before washing. Thoroughly vacuum all areas of window frame using the soft brush attachment to remove loose dirt and dust. Hose off outside window area if subject to blowing sand or grit.



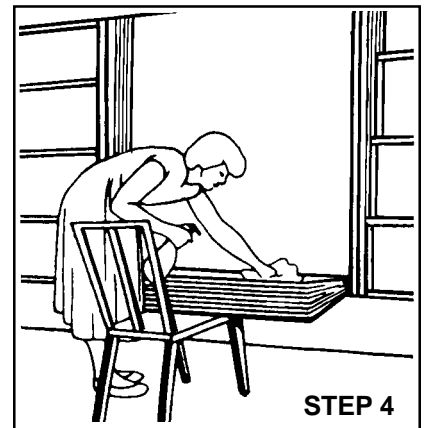
STEP 2: To release the pressure catch on the top panel, raise the bottom three panels up to the top, then pull down sharply on all three at once. Lower all panels to the bottom panel position.



STEP 3: Use a chair to rest the windows on when they are tipped out. To do this, release the slide latches of the front panel and tip the top of the panel towards you, resting it on the chair. (Bottom of panel stays in track.) Repeat with each remaining panel.

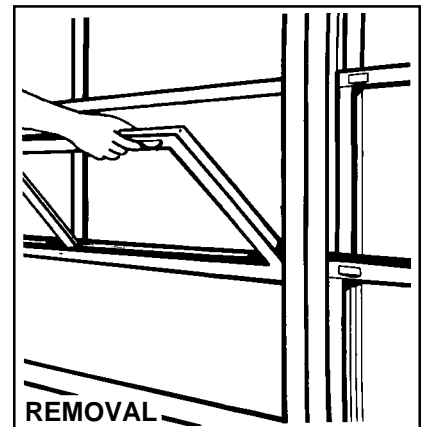
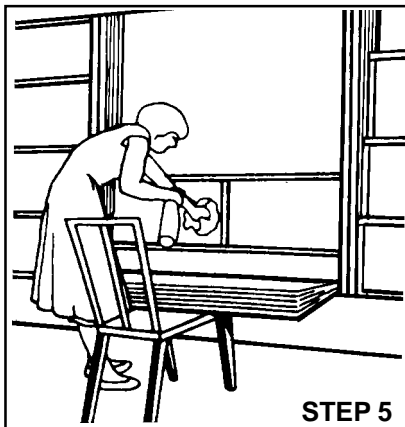


STEP 4: Rinse with clear water first. Then using a soft cloth and mild solution of dishwashing detergent and water, clean face-up portion of the top panel (outside of the top panel). Spots from hard water mineral deposits from a sprinkler or hose can be removed with a mixture of warm water and Woolite®, or Murphy® Oil Soap (one capful to one gallon water). Or, when necessary, apply a small amount of kerosene on a clean cloth and rub it lightly in a circular motion over the affected area.



NOTE: For best results, we recommend a final cleaning with our Vinyl Cleaner available from your PGT distributor. It will prolong the life of your Eze-Breeze Sliding Panels and reduce static electric charges that attract dust.

STEP 5: Lift top panel. Return it to track by pushing thumb latch back. Raise the panel to a comfortable working height and clean the inside. After cleaning, move the top panel to its position at the top of the window opening. Repeat steps 4 and 5 with the remaining panels returning each to their normal position when cleaned.



REMOVING YOUR PGT EZE-BREEZE SLIDING PANELS

It should not be necessary to ever remove your vinyl windows except in the event of a heavy storm warning. But, if necessary, follow these simple steps.

1. Start with innermost panel (bottom panel).
2. Release slide latches and tilt top toward you at about a 45 degree angle.
3. Then lift up the side to remove fixed pin at bottom of track.

4. Carefully remove panel and set aside. Repeat for remaining panels.
- Note:** Marking each panel will help you replace them in the proper order later.
5. To replace, reverse procedure.

PGT[®]
Visibly Better.[™]

P.O. Box 1529, Nokomis, FL 34274
877.550.6006